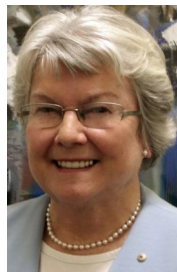




Queen Adelaide Club

Newsletter - August/September 2014

FROM THE PRESIDENT



2014 will probably rank as one of the most exciting years in our Club's 105 year history.

In late June, there were two lively Member Information Sessions and the exciting news is that, after 18 months of hard work by all those involved, our building plans have been approved by the Inner Metropolitan Development Approval Commission!!

However, the next steps in bringing these plans to fruition are complex and costly. There is much work to do on design detail, costing the project, securing a tenant for our retail space, legal expertise for the apartment licences, fine tuning our financial plans and, most importantly, ensuring that you, our Members, receive updates regularly so that you are kept informed of the progress of this important project. The far sighted women who founded and developed our Club in the early 20th century knew that for the Club to remain viable they had to plan for the future and this re-development can ensure that our Club continues to flourish.

I, and all those involved in this project, express our heartfelt thanks to the many generous contributors to the Building Fund who have given and continue to give financial support to make sure that the project succeeds.

In the meantime, there have been many special events including the lunch for Longstanding Members who have been Members for 40 or more years.

Our Keynote Address by Mrs Liz Scarce, wife of the soon to retire Governor of SA, was interesting and inspirational. Apart from her commitment to the demands of her position, her personal involvement in worthy causes makes her a role model for us all.

The lunchtime conversation between Lisa Slade and Robyn Stacey added to the display of her photographic works. Thanks to the Members of our Art Committee who arranged this and also the purchase of Robyn's work "Miss Eliza Wentworth's Glassware" with funds left from our commissioned Anna Platten painting which usually graces our stairwell.

The display of Wedding Photographs and the wonderful Wedding Parade and Breakfast were very popular and successful thanks to the many helpers too numerous to mention. Many of us travelled in the footsteps of Shackleton with Dr Paul Willis, enjoyed dinner after the Club's Golf Day and viewed the Waterhouse Exhibition in conjunction with Members of The Adelaide Club whom our Club hosted for dinner with Brian Oldman the new Director of the S.A. Museum.

August and September promise more exciting events, so please keep your Calendars handy and book early!

Meredyth Sarah AM
President

AGM 2014

The Annual General Meeting is scheduled for Wednesday 17 September 2014 commencing at 11.30am followed by lunch at 12.30pm. Book with Reception. Notification of any special business must be forwarded to the General Manager no later than 13 August 2014.

Nominations for Office Bearers and Board Members to be elected at the AGM must be lodged with the General Manager by 5pm on 13 August 2014. Further information and nomination forms are available

ATTENTION ARTISTS!

Bloomin' Art 30 September 2014

All resident artists are invited to exhibit their work. **Modern Art, Still Life, Landscapes, in oils, acrylics, watercolour,** the more varied the more interesting. Stephen Forbes, Executive Director for the Botanic Gardens is the Guest Speaker for the Launch Lunch. This is a must see event. Book early.

For more information please contact Jeanette Waterman at jw@smew.com.au or 0418839371.



BOARD

President

Meredyth Sarah AM

Vice President

Kathryn Bullen

Mandy Ayres

Leonie Clyne

Sue Cocks

Ruth Hemmerling

Pamela Martin PSM

Karen Thomas

MEMBERS' COMMITTEE

Elizabeth Bauze

Penny Bowen

Stephanie Couche

Anne Day

Susan Hancock

Charlotte Huestis

Sue Kitchener

Susan Leitch

Cherilyn Maley

Dee Mason

Margaret Munyard

Sue Nosworthy

Marilyn Pitt

Diarshul Sandhu

Mary Scammell

Deborah Schultz

Helen Sinclair

Catherine Thring

Nene Tolley

Jeanette Waterman

Marion Wells

General Manager

Rosemary Gould

NEW MEMBERS

Mrs Sheryn Foord

Mrs Beverley McDonald

Ms Anna McLeod

Mrs Lynette Pedler

Ms Elizabeth Perry

Mrs Karyn Sprod

INSPIRING SCIENCE FOR THE YOUNG

A morning for Grandparents to introduce Grandchildren to the Wonders of Science and the Treasures of the SA Museum will be held on **Saturday 27 September – 10am**

Join Professor Steve Donnellan from the SA Museum for a very special tour of the "behind the scenes" at the Science Centre. You'll see laboratories where gene sequencing occurs, discover how scientists find and describe new species, see SA's amazing extinct mega-fauna and gigantic shark fossils and the earliest animal fossils that provide clues to unravel the origins of life on earth.

Meet in the Museum Foyer on North Terrace at 10am for a one and half hour tour. Lunch has been organised for 11.45am in the Museum Cafe. Numbers are limited - book early. Members only are to accompany children/grandchildren (8-12 years old).

Mary Lou Simpson, Convenor

FLOWERS

A very big thank you to all the Members who have so kindly donated greenery over the winter months while a variety of flowers have been scarce.

The Flower Committee for June and July, led by Jeanette Waterman and Marilyn Pitt, has managed to keep the Club looking bright and colourful during this time, and our thanks go to them and their helpers for their efforts.

Stephanie Couche and Mary Scammell, Co-convenors, Flower Sub-committee

ART COMMITTEE

Miss Eliza Wentworth's Glassware joins the Queen Adelaide Club Art Collection

The Board of the Queen Adelaide Club recently approved the acquisition of the Robyn Stacey photograph, *Miss Eliza Wentworth's Glassware*, for the Queen Adelaide Club Art Collection. It is five years since the Club purchased an art work for its permanent Collection, when Anna Platten's *The Journey-Thunder* was acquired as part of the Club's Centenary celebrations.

Miss Eliza Wentworth's Glassware is from Robyn Stacey's 2008 series, *The Great and the Good*, a phrase used to describe the prominent English pioneering families of NSW: the Macleays, the Macarthurs and the Wentworths. These families catalogued, shaped and irretrievably changed their new world...funding museums, creating gardens and building grand houses.

Miss Eliza Wentworth's Glassware documents a delicate arrangement of crystal. The glassware is arranged in a simple wooden Sycamore washing up bowl, used at Vacluse House to wash fragile glasses and crystal. The beautiful arrangement instantly attracts you and there is a curious interplay. Are we viewing a lost world or one which is instantly recognisable in the life of the Club?

As the Club looks to the future with the prospect of change, this photograph beautifully captures the moment ..with the broken shards of glass acting as an archaeological fragment linking past and present.

In keeping with the Policy of the Board to acquire only major works for the Club Collection, this photograph is an Edition of 5 with 2 AP (Artist Proofs). The Club's photograph is the final AP. Other Editions of *Miss Eliza Wentworth's Glassware* are held in the Collections of the National Gallery of Australia, the Monash Gallery of Art and the University of Technology William Robinson Gallery.

The photograph is hanging in the Sitting Room and has been enjoyed as part of the Nora Heysen Exhibition at the Club.

Susan Armitage, on behalf of the Art Committee

FROM THE GENERAL MANAGER

Winter is slowly disappearing and we have a wonderful Spring and Summer Programme ahead to herald the brighter weather. The Special Events Committee and the many Interest Groups have been hard at work and the Summer Programme is enclosed with the Newsletter. To assist with your bookings, please find listed below the current status of the Winter functions:

- * High Tea with Monique Bowley - Saturday 9 August - Limited seats available
- * Lunch with Ian Strout - Tuesday 12 August - Limited seats available
- * Queen Adelaide's Morning Tea - Friday 15 August - Seats available
- * Foodies Dinner - Tuesday 26 August - Limited seats available
- * Dinner with Kate Cullity - Friday 29 August - Seats available

Information on all of the above events can be found in your Winter Programme and on the Web Site.

In addition to the above, we are fortunate to have Rick Stein as a special luncheon guest on Wednesday 27 August. Notification was sent out in July via email and is now waiting list only. **However, for Members who do not have email, we have retained a small number of seats. Please ring Jane Birkin to secure your booking for this exciting event.**

In August, the Club is hosting the annual Queen's Plate Bridge Tournament. From Tuesday 19 August we will have sixty interstate guests at a Welcome Dinner followed by two days of serious play. Currently the QAC holds the Queen's Plate title, and we wish our twenty team Members well and all the visiting Team Members an enjoyable visit.

Several items of interest in the Summer Programme include Cocktails and Conversation with guest Brook Andrew. Please see further information about this wonderful artist in the Newsletter. Elaine Bensted, Chief Executive of the Zoo, is guest speaker on Friday 12 September and will be a very interesting and lively speaker. Christmas is just around the corner, so why not join Members Sue Herald and Sally Cook to learn how to make your own Bon Bons. To round out the first month of Spring we are again celebrating Bloomin' Art. Stephen Forbes, Executive Director Botanic Gardens, will be officially opening our Exhibition on Tuesday 30 September and the Art and Installations will be on view until Friday 3 October. Don't miss it.

I look forward to seeing you at the Club.

Rosemary Gould

GIFTS AND DONATIONS

Building Fund Contributions:

Mrs Heather Armour, Mrs Jane Ayers, Mrs Anne Badger, Mrs Rosemary Begg, Mrs Lesley Beresford, Mrs Deborah Boylan, Mrs Susan Brennan, Mrs Juliet Brown, Mrs Barbara Brummitt, Mrs Kathryn Bullen, Mrs Phillippa Burnett, Mrs Robyn Cowan, Miss Elizabeth Darby, Mrs Jule Davidson, Lady Downer, Mrs Nicola Downer AM, Mrs Carrie Gilbert, Mrs Dianne Gray, Mrs Nicky Greenslade, Mrs Ruth Hemmerling, Mrs Elizabeth Higgins, Mrs Rosemary Hill-Ling OAM, Mrs Briony Jose, Ms Julie Maslen, Mrs Dee Mason, Mrs Jane McGregor, Dr Rosemary Moore, Mrs Margaret Munday, Mrs Susan Porter, Mrs Judith Rogers, Mrs Christina Ross, Miss Jane Ross, Mrs Patricia Ryan, Mrs Deborah Schultz, Mrs Jenny Sever, Mrs Mary Lou Simpson, Mrs Minna Sitzler AM, Dr Jane Smith, Mrs Doody Taylor, Mrs Marcia Thomas, Mrs Jane Wallace, Mrs Lynda Walsh, Mrs Rosemary Waterman, Mrs Diana Watson, Mrs Marion Wells.

THURSDAYS IN THE CLUB

ART GROUP II

Third Thursday

21 August *Extreme Climate - Nicholas Folland (SALA)*
Meet at the Art Gallery Foyer at 10.20am

18 September *Visit to The Adelaide Club*
Meet at TAC at the SPECIAL time of 10am

HISTORY LOVERS

First Thursday — 12.30pm

7 August *No History Lovers this month*

4 September *Hidden Hahndorf*
Speaker: Anni Luur Fox

PEOPLE, PLACES and PROFESSIONS

Fourth Thursday — 12.30pm

28 August *From Sheep Station to High Finance*
Speaker: Peggy Barker

25 September *Retired Education Volunteers for Isolated Students*
Speaker: Jeanette Coombes

TRAVELLERS' TALES

Second Thursday — 12.30pm

14 August *Portugal - In Search of Nandos*
Speaker: Chris Gould

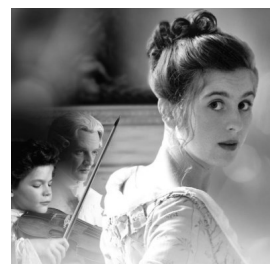
11 September *Swimming with Whale Sharks in WA*
Speaker: Nan Williamson

FILM MORNING

MOZART'S SISTER

Thursday 30 October - 10.30am

Light lunch following the film - \$27



WALKERS' GROUP



Tuesday 12 August takes us to the **Sand Dunes of Tennyson**. Meet at the car park just south of Estcourt House, Military Road at 10am.

Tuesday 16 September the **Mt Lofty Botanic Gardens** will be at their very best for us. Meet at Lampert Road, Piccadilly entrance at 10am.

Tuesday 21 October a return to our favourite, the **Adelaide Botanic Gardens**, finishes the year. Meet at the Friends' Gate, Plane Tree Drive at 10am. Followed by lunch at the QAC.

DINNER WITH KATE CULLITY
Landscape Architecture and Urban Design

Friday 29 August - 7pm

The Chefs have planned a scrumptious dinner to complete this exciting evening.

Members and Guests - Mixed



Approximately \$90

DINNER WITH DR BEV FOSH & DR AMY JEEVES

Breast Cancer and Reconstruction

Wednesday 24 September - 6.30pm

Come along and hear the very latest available information about breast cancer - prevention, detection, treatment and reconstruction.

Members and Guests - Mixed



Approximately \$90

COCKTAILS & CONVERSATION

Brook Andrew
in Conversation with
Erica Green

Wednesday 3 September
6pm

Book with Reception if you would like to stay for Dinner following this event.

Members and Guests - Mixed

Approximately \$36

BLOOMIN' ART LAUNCH LUNCHEON
with Special Guest Stephen Forbes,
Executive Director, Botanic Gardens

Tuesday 30 September - 12 noon

Bloomin' Art will once again spring the Club to life launching a four day exhibition of exciting works created by our very own and very talented QAC artists and florists.

Members and Guests - Ladies Only



Approximately \$69

DINNER WITH ELAINE BENSTED
Chief Executive of the Royal Zoological Society of SA

Friday 12 September - 7pm

More than just a great day out!
What else does the Zoo deliver to South Australians?

Members and Guests - Mixed



Approximately \$90

VERY SPECIAL LADIES ONLY HIGH TEA

Treat your daughters, daughters-in-law, granddaughters or nieces to an afternoon at the QAC.

Thursday 9 October - 3pm

Enjoy delicious treats at your own table in the Dining Room with bubbles or pink lemonade.

Members and Guests - Ladies Only



Approximately \$37

BEAUTIFUL BON BONS

Friday 19 September - 10.30am

Learn how to make a beautiful Bon Bon, guided by Sue Herald and Sally Cook and take home your masterpiece.

Followed by a delicious sandwich lunch.

Members and Guests - Ladies Only

Approximately \$45



LUNCH WITH BRIAN PARKES
Chief Executive Officer, The Jam Factory

Friday 10 October - 12 noon

Having worked in art and design organisations for more than 20 years, Brian is passionate about promoting the social, cultural and economic value of creativity and design.

Members and Guests - Mixed

Approximately \$78



FOODIES



Tuesday 26 August - 6pm

Offal - back by popular demand!

Members and Guests - Mixed

Tuesday 16 September - 6pm
Chefs' Challenge

Members and Guests - Ladies Only



Approximately \$65



INSPIRING SCIENCE - HOT PLANTS

Botanical Secrets with Professor Roger Seymour

Thursday 18 September - 6pm

"From the beautiful appearance and scent of the sacred lotus of Asia to the disgusting 'dead-horse arum' of Corsica, this talk takes you on a 40-year odyssey around the world in an investigation of heat-producing flowers."

Members and Guests - Mixed

Approximately \$65

